



SATURN PRODUCTION GUIDE

Thank you for making Saturn a stop on your tour> At Saturn, we strive to provide a welcoming environment for our artists and we do our best to make your show a singularly great experience. Concerning our audio and lighting, we keep everything in prime working order so that all gear listed in the specs below will function flawlessly upon your arrival. Please let us know if you have any concerns or questions. Thank you.

Venue Production Contact

Brian Teasley

205.370.5606

brian@saturnbirmingham.com

OVERVIEW:

The Saturn is a 525 capacity music and events venue with full service bar and an adjacent coffee shop/cocktail bar serving Domestique coffee.

POWER SYSTEM

AUDIO:

- 225 amp Lyntec Remote Power Center Box with motorized breakers, 3 phase, 4 wire, shielded, isolated transformer and isolated ground
- (8) 20 amp isolated circuits at stage in various stage locations
- (2) 20 amp isolated at FOH in 4 locations
Power conditioners located at
each major hub Individual surge protectors on every breaker

LIGHTING POWER:

- (Single Gang 20 Amps)
- (8) Non Dimming Stage Lighting
- (1) Utility
- (2) Moving Light circuits
- (1) Front-of-House Electric
- (2) Moving Light circuits
- (5) Wall Boxes – (2) Stage Lighting, (1) Utility, (2) Moving Light circuit
- Stage Lighting Circuits: (20) 20A 120V circuits wired to 20A NEMA 5 duplex Edison receptacles
- Utility Circuits: (10) 20A 120V circuits wired to duplex Edison receptacles.

GUEST POWER:

- 100A, 120V/208V, 3 Phase, 5-wire AC distro with Camloc and bare wire tails

BUS SHORE POWER:

- We are equipped with dedicated 100-amp shore power for buses on the north side of the building (2nd Ave. S) between the patio and garage load-in area.

AUDIO EQUIPMENT

FOH CONSOLE:

- Midas Pro 2

FOH HOUSE SPEAKERS:

- (6 Per Side) L'Acoustics DV-DOSC
- (6) L'Acoustics SB-218 Subs
- (2) L'Acoustics 8-XT Front Fill

DIGITAL STAGE BOX:

- Midas DL251

PROCESSING:

- Lake Countour

MONITOR SYSTEM:

- Midas Pro 2 (Positioned Stage Left)
- We can accompany 7 floor mixes and 1 full top / bottom drum mixes

MONITOR SPEAKERS:

- (14) Tannoy VXP12 HP
- (2) Tannoy VX15 HP (Drum Fill Top)
- (2) L'Acoustics DV-Sub (Drum Fill Sub)

PROCESSING:

- Lake Countour

AMPLIFICATION:

- (16) L'Acoustics LA48A

MICROPHONES:

- (2) AKG D112
- (1) AKG V12
- (2) Audix ADX51
- (2) Audix D6
- (1) Audix I5
- (1) Beyerdynamic M 69 TG
- (1) Beyerdynamic M88 TG
- (1) Beyerdynamic M201
- (1) Blue Encore 200
- (2) EV RE-320
- (1) Heil PR30
- (1) Sennheiser E602
- (9) Sennheiser E604

- (3) Sennheiser E609
- (2) Sennheiser E614
- (2) Sennheiser E906
- (3) Sennheiser MD-421
- (3) Shure Beta 52A
- (5) Shure Beta 57
- (5) Shure Beta 58
- (1) Shure Beta 91
- (2) Shure KSM27
- (1) Shure SM7B
- (1) Shure SM57 (Granelli Right Angle-Style for Snare)
- (10) Shure SM57
- (14) Shure SM58
- (8) Shure SM81
- (1) Yamaha Sub Kick

DIRECT BOXES:

- (1) Audiotec Active
- (3) Radial Pro
- (3) Radial Pro2 Stereo
- (3) Radial JDI Duplex (1 NFG)
- (4) Radial J48 Active
- (4) Whirlwind Director Passive

MICROPHONE STANDS:

- (14) K&M Tall Booms
- (14) K&M short Booms
- (2) Frameworks straight stands (tripod base)
- (2) Frameworks kick stands
- (2) Primacoustic kick stands
- (2) Ultimate Support straight stand (round base)
- (2) LP Claws
- (2) Audi D-vice
- (2) Audix Cabgrabber

MISCELLANEOUS:

- (3) iPads
- (1) MacBook Pro
- Pro Tools recording upon request

DJ EQUIPMENT: Various turntables, mixers and related gear available upon request.

BACKLINE: We have a miscellaneous assortment of gear on-site; however, please advance any specific backline requirements at least a month prior to your show.

LIGHTING EQUIPMENT

CONTROL SYSTEM:

- ROAD HOG 4 – DMX 512 Console, 8 universes of DMX 512 /ArtNet
- CHAUVET NET-X – ArtNet/DMX 2 x 8 Distribution
- Console Plug-in Locations (Front-of-House, Booth 2 & Up Stage Left)
- Distributed DMX to all stage electrics/battens and wall boxes, plus 2 on stage

FIXTURES AND ACCESSORIES:

- CHAUVET - AMHAZE II Hazer (Water Based)
- (2) CHAUVET Ovation E-190WW - 36deg LED Ellipsoidal (with GOBO Package)
- (6) CHAUVET COLORado Batten 72 Tour RGBAW
- (8) CHAUVET COLORado 1 Quad Zoom Tour – RGBW 7 to 29 Degrees
- (2) CHAUVET COLORdash Par-Quad 7 – RGBA
- (2) CHAUVET COLORdash Batten Quad 6 – RGBA
- (6) CHAUVET ROGUE R2 Spot RGBW Spot
- (4) CHAUVET ROGUE R2 Wash RGBW
- (6) CHAUVET - STRIKE 324 Strobe LED
- (2) CHAUVET - STRIKE 882 Strobe LED
- Assorted jumper cables and adapters
- House Color (For Ellipsoidals) – ON REQUEST

RIGGING (*All scrimms and banners must be inherently flame retardant*)

- (3) Front-of-House Electric – 24'-0" Dead Hung 1.5" schedule 40 pipe batten. See Structural Engineer for uniform working load.
- (4) Stage Electrics - 24'-0" Dead Hung 1.5" schedule 40 pipe batten. See Structural Engineer for uniform working load.
- (2) Soft Good Battens – 24'-0" Dead Hung 1.5" schedule 40 pipe batten. See Structural Engineer for uniform working load.
- (2) Cyc/Spare Batten – 28'-0" Dead Hung 1.5" schedule 40 pipe batten. See Structural Engineer for uniform working load.

SOFT GOODS and PROJECTION SCREENS :

- Upstage Curtain (10'H 14OZ IFR Velour – BLACK 50% Fullness) Open at exits.
- White Muslin Cyc (BY REQUEST - IN ADVANCE)
- Upstage - Cineperm Fixed Screen 220" (108" x 192") HDTV 16:9
- Downstage - VMAX Plus4 205" - Front Electric Projection Screen 16:9 (115" x 205")

VIDEO DISTRIBUTION:

- UPSTAGE Projector - NEC - NP-UM330W Ultra Short Throw - WXGA LCD
- FOH Projector - NEC NP-PA722X 11ZL Projector 7200 Lumens 6000:1 Contrast
- INPUTS – FOH Booth & Downstage Left – VGA, HDMI & SDI

RISERS (Suggested TBD)

- (2) Staging Concepts SC90 4' x 8' platforms with 12", 18" and 24" legs.

ADDITIONAL INFO

LOAD IN/PARKING: Primary load-in is located on 2nd Ave S. off of 41st. St. S. at the garage door entrance. This location provides direct access to the stage via ramps. If two bands are loading in simultaneously, we have a secondary load-in in the alleyway of the south side from our venue, directly across the street from Saw's Soul Kitchen and Post Office Pies. Please see diagram for a visual representation of the loading scenario.

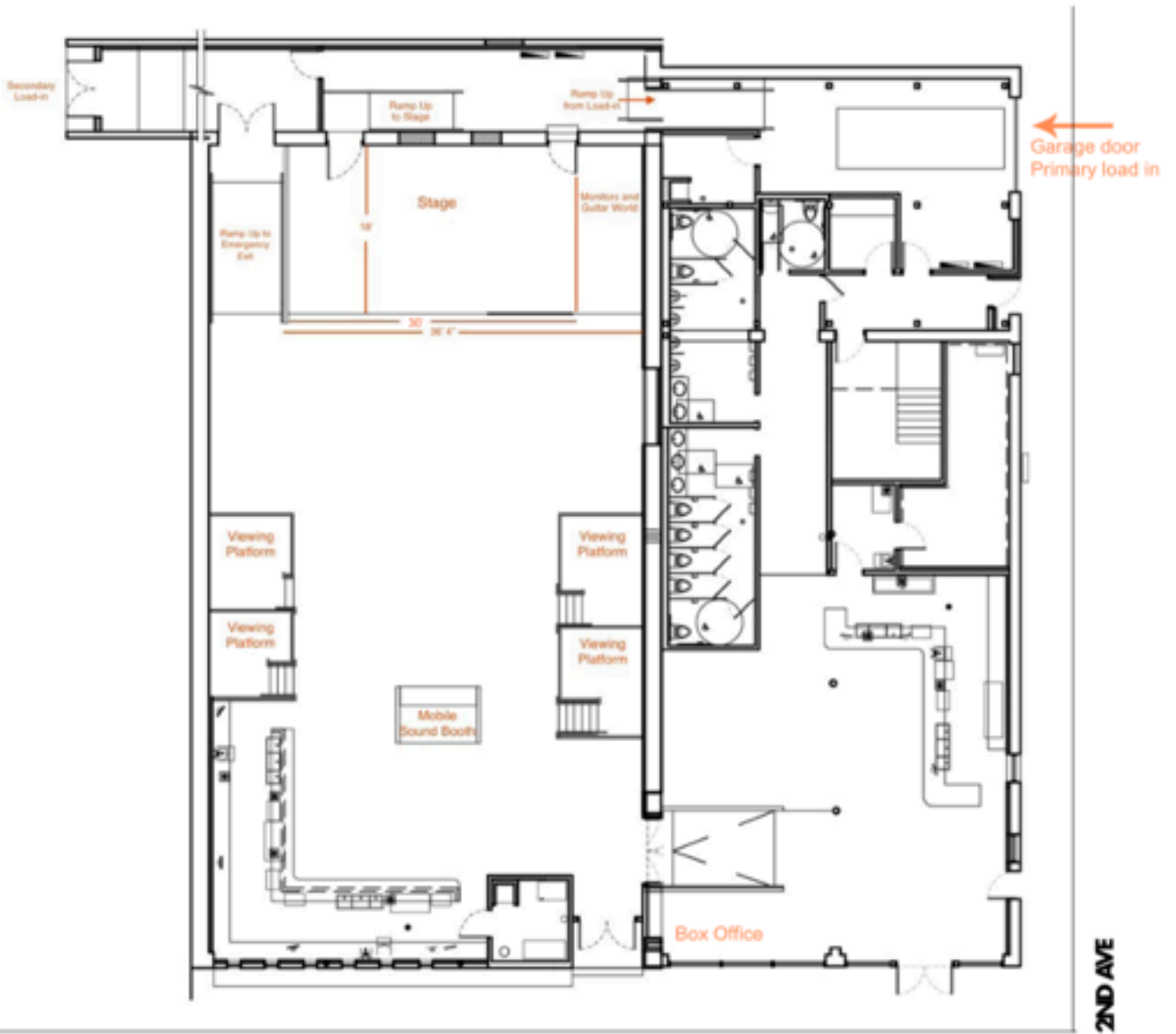
BACKSTAGE/DRESSING ROOMS:

- The band apartment includes:
- 2,200 square foot band apartment space
- 3 bathrooms (2 with full baths with showers and tubs)
- 2 private green rooms /bedrooms
- 4 enclosed bunks with full sized beds
- Full kitchen facility
- 2 common areas with sleeper sofas
- Laundry facilities
- Tour manager office/alcove
- Pool table
- Jukebox
- Stereo and turntable with selection of LPs
- 4 flat screen TVs with cable (movie and sports channels included)
- Hard drive accessible through Apple TVs (labeled "computers") with thousands of movies
- Wide selection of video games
- High speed open network internet
- Mini-library with wide selection of books
- Huge private porch for outside dining
- Enclosed overnight garage for a single van or sprinter with the option to load out the following morning

Overnight band apartment accommodations:

- At Saturn, we're happy to offer overnight accommodations for one band, for a touring party of up to 12 people for \$100 a night paid at time of settlement. Please reserve at the time of advance and please note the first option to stay goes to the headliner.
- Checkout is the following day at noon.
- We also offer a potential in-house, home-cooked breakfast available for \$15 per head (this needs to be arranged at least 3 weeks prior to the night of engagement).

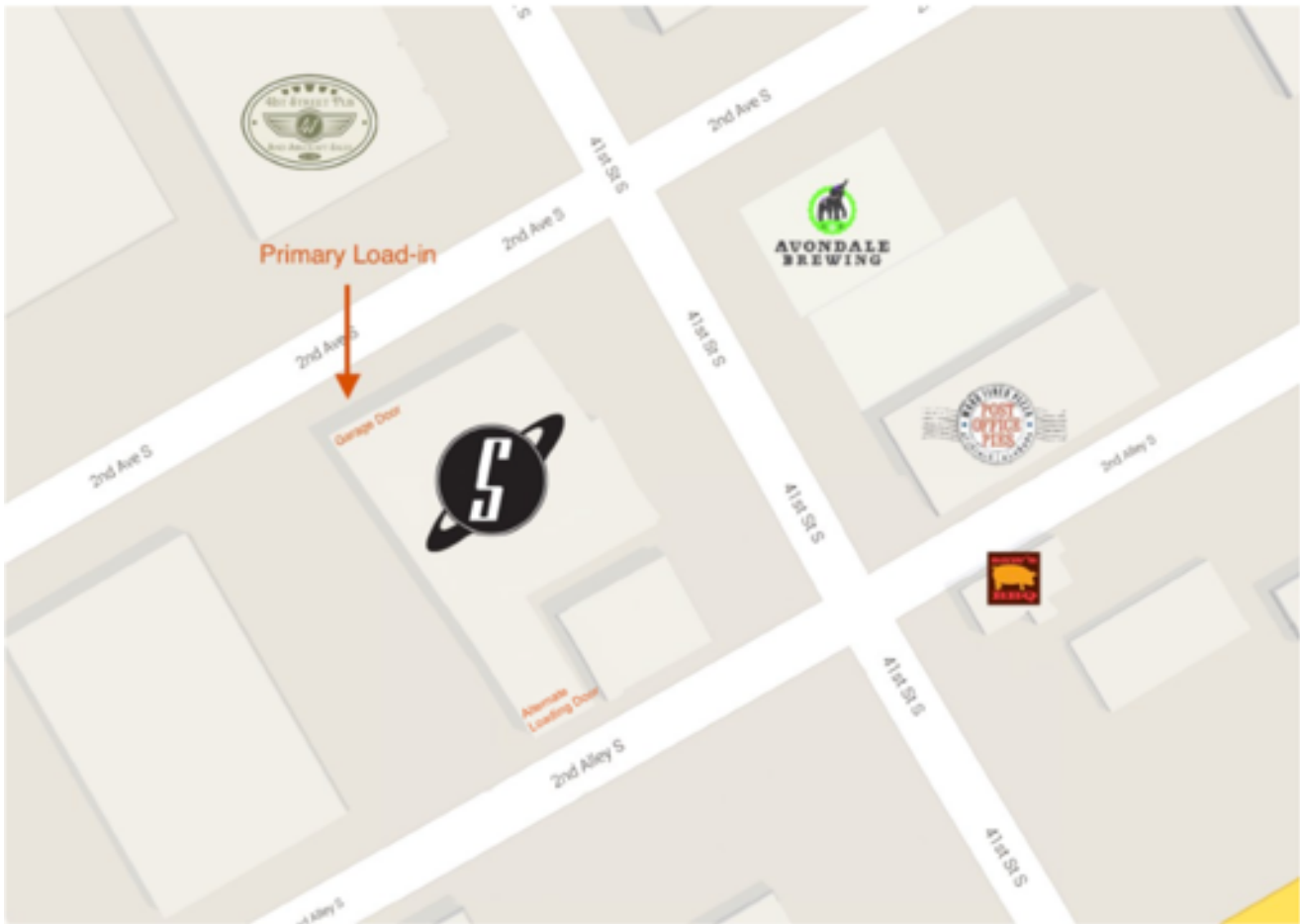
VENUE LAYOUT



41ST STREET

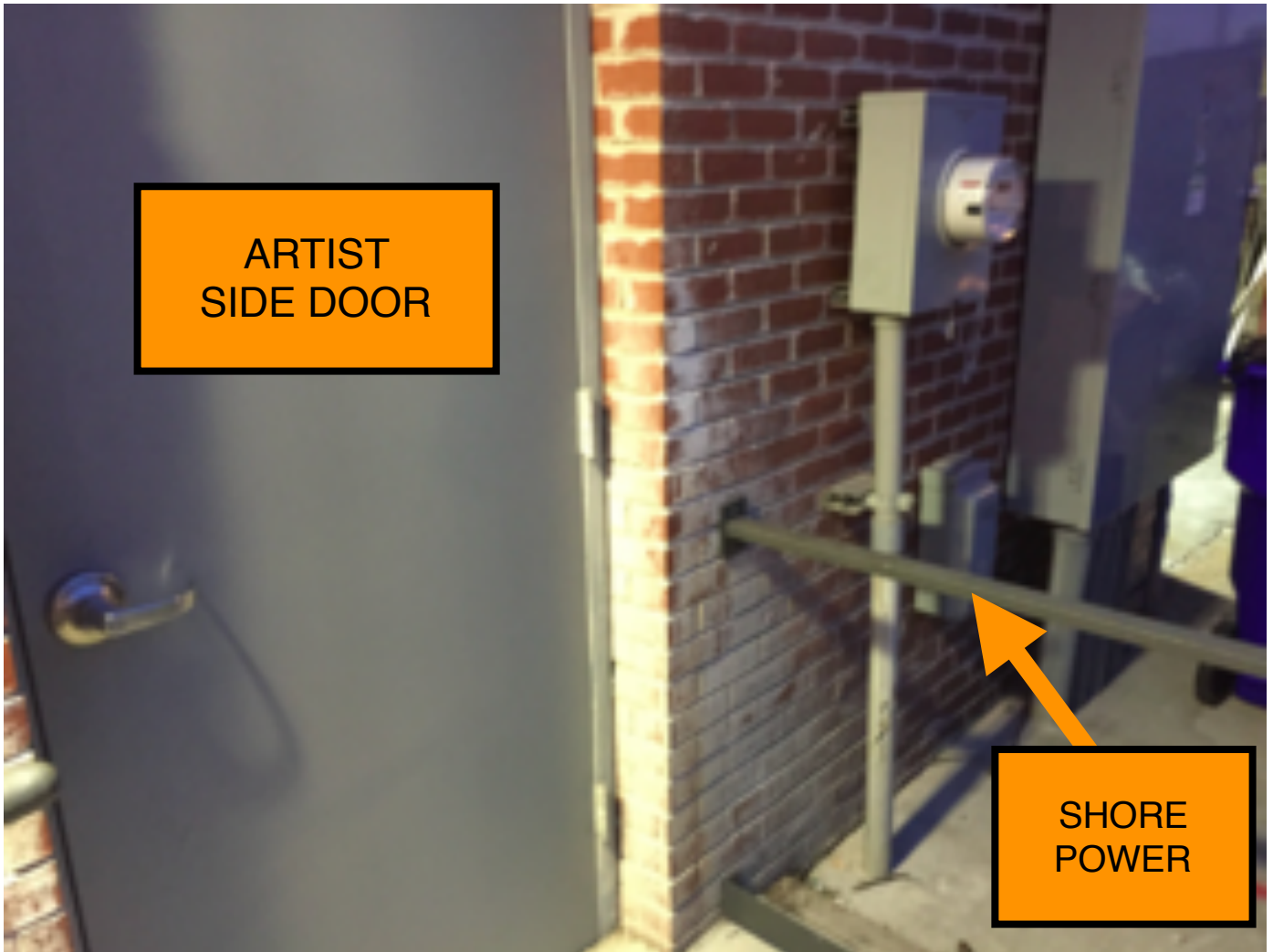
2ND AVE

STREET MAP



Park on 2nd Ave S with the nose of your vehicle facing 41st St S for optimal load in.

SHORE POWER LOCATION



LIGHTING PATCH LIST



Chauvet Rogue R2 Spot
21 channel mode
Universe 1

193 214 235 256 277 298



Chauvet R2 Wash
17 channel mode
Universe 1

319 336 353 370



Chauvet COLORado 1 Quad Zoom Tour
RGBW
'Tour' Mode (12 channel)
Universe 2

7 19 43 55 79
 31 67 91



Chauvet COLORdash Batten-Quad 6
RGBA
24 channel mode
Universe 1

1 25 97* 49 73
97* 121 145 169
(*double patched)



Chauvet COLORado Batten 72
'Block 2' mode (15 channels)
Universe 1
5 fixtures addressed to **483**
3 RGBWA 'blocks' per fixture (483, 488, 493)



Chauvet Ovation E-190ww
3 channel mode
Universe 2

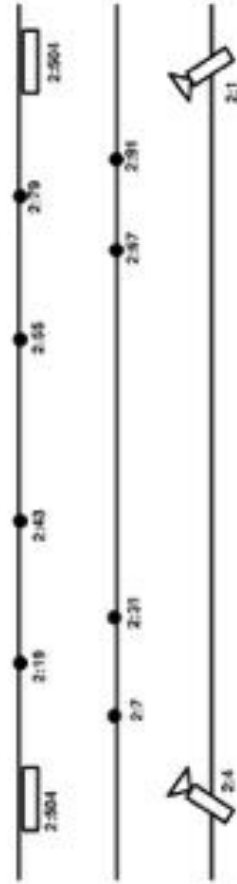
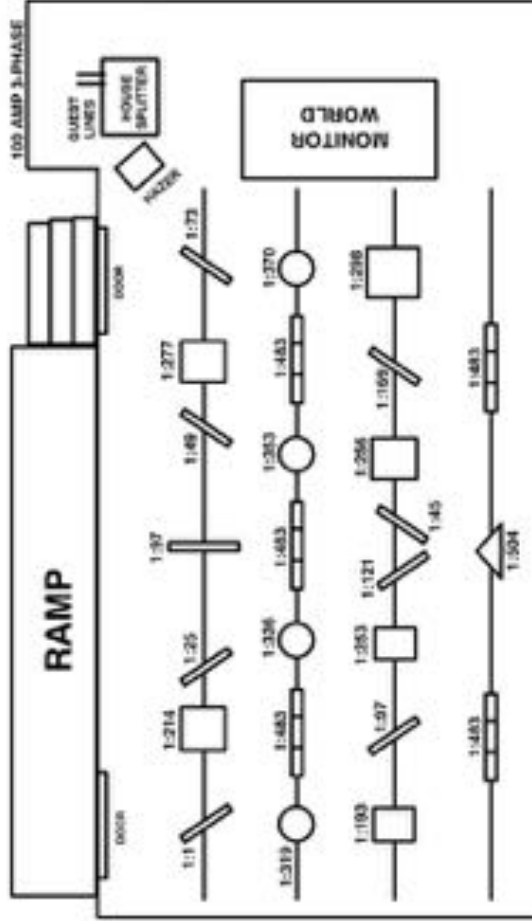
4 1



Chauvet Strike 882 strobe
5 channel mode
Universe 2
2 fixtures as DS blinders

504

SATURN LIGHT PLOT



	CHAUVET ROUGE R3 SPOT 21 CM
	CHAUVET ROUGE R3 WASH 17 CM
	CHAUVET COLORASH BATTEN QUAD 4 21 CM
	CHAUVET COLORADO BATTEN 72 TOUR 18 CM
	CHAUVET COLORADO 1 QUAD ZOOM TOUR 12 CM
	CHAUVET STRIKE 304 1CM
	CHAUVET STRIKE 860 1CM
	STATON S-1000W 1CM

